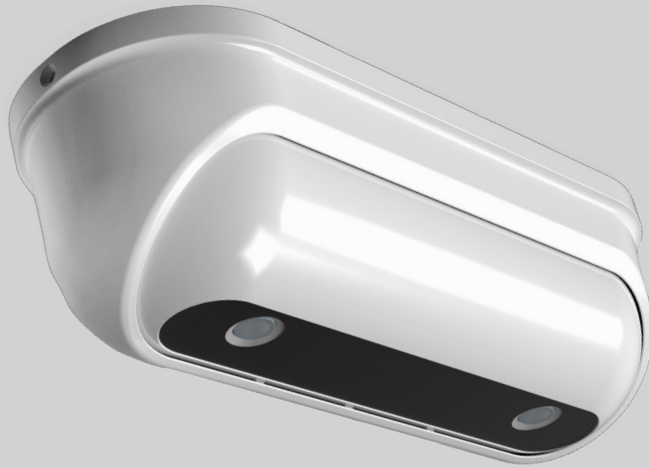


Intenta S2100 security Intelligent 3D Room Surveillance



People Counting



Dwell-Time Measurement



Access Control



Intelligent Surveillance



Behaviour Analysis



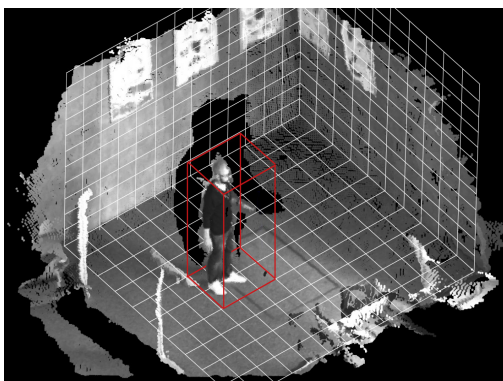
Object Recognition

The sensor for your **security application**



3D-Vision Technology

- Individual person detection, even if partially concealed
- Reliable detection in the event of fluctuating light conditions
- Classification of behavioural patterns
- Accurate measurement and localisation of people and objects



Embedded System

- Integrated image processing
- Automatic detection of objects and people in real time
- No additional computer technology required



Web Interface

- Simple access via browser
- Intuitive operation
- Visualisation of the processing
- Uncomplicated firmware updates



Installation and Configuration

- Optimized for security related areas of application
- Robust, tamper-proof security housing
- Concealed ports and cables
- Deinstallation only with special tools
- Simple integration into existing systems
- Fully automatic calibration
- Universal interfaces
- Ceiling installation
- Installation independent of the angle of inclination



Data Security

- Optional storage and transfer of image data
- Internal data storage
- Encrypted data export possible

Technical Data

Power supply (via PoE)	PoE Class 0 (IEEE 802.3af)
Power consumption	max. 5W
EMC	EN55022
Operating temperature	0°C to 40°C
Storage temperature	-20°C to 70°C
Air humidity	10-90% relative humidity (non-condensing)
Required illumination	min. 5 Lux
Data storage	up to 32 GB
IP protection class	IP40

Interfaces

Ethernet	1000MBit, RJ45
Web browser	Chrome, from version 40 Firefox, from version 31 Internet Explorer, from version 11
Firmware update	via web interface

Standards and Protocols

Streaming standards	HD (720p), Color Image, MJPEG
Logical protocols	Message API, DHCP, RTP, RTSP, FTP, HTTP, HTTPS, NTP

Housing

Housing material	Plastic, Stainless Steel
Protective lens cover	Polycarbonate cover
Dimensions (L x W x H)	292mm x 112mm x 90mm
Weight	approx. 1000g
Colour	white (similar RAL 9003)

Configuration Possibilities

Detection zones	10 per sensor
Counting lines	10 per sensor

